

Trimble och öppna standarder.

Leif Granholm, BIM Ambassador, SVP



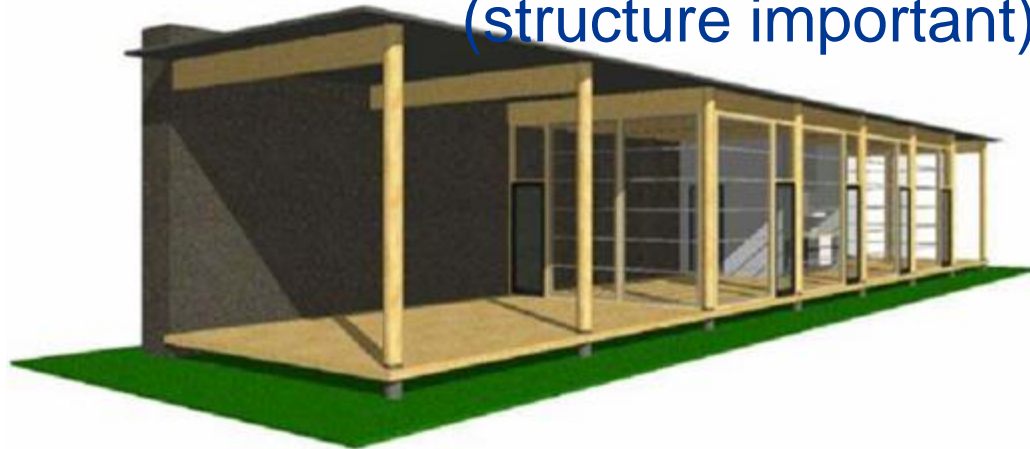
Transforming the way the world works

BIM Graphics to objects and geometry

Drawings are graphics (appearance important)



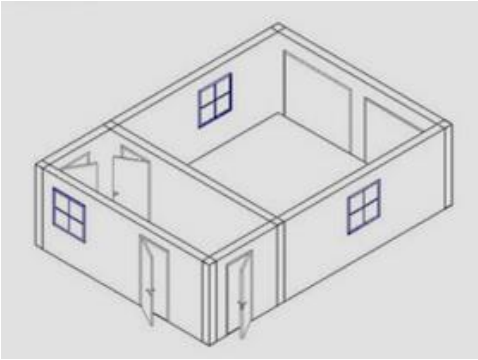
A BIM consists of objects
that may contain geometry
and/or attributes
(structure important)



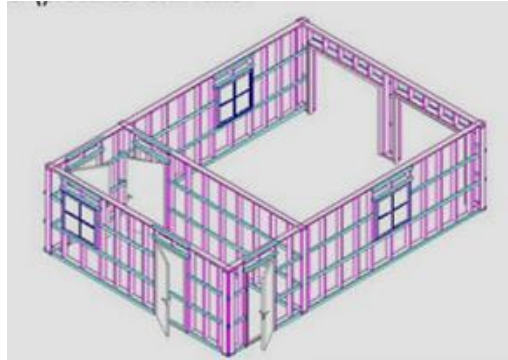
BIM – Structured data

Objects describing building

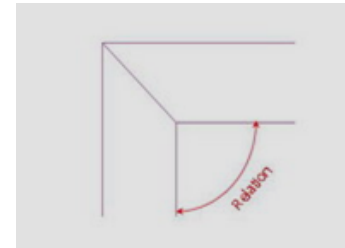
Functional objects



Physical objects



Logical objects

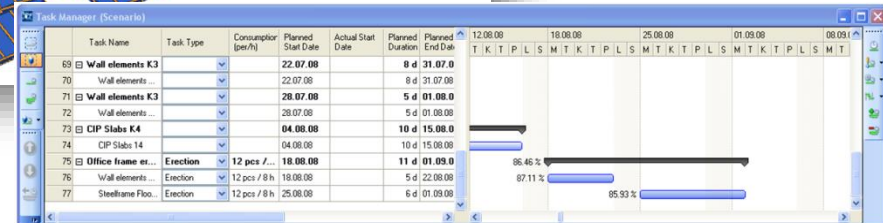
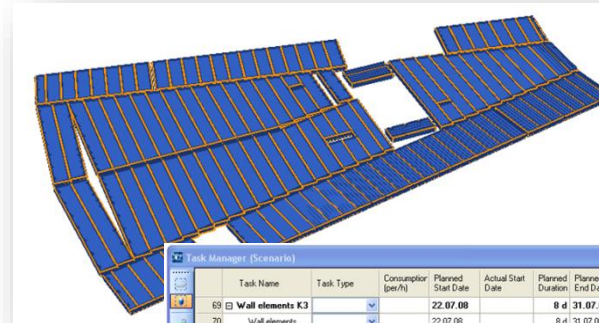


Abstract objects



Objects describing process

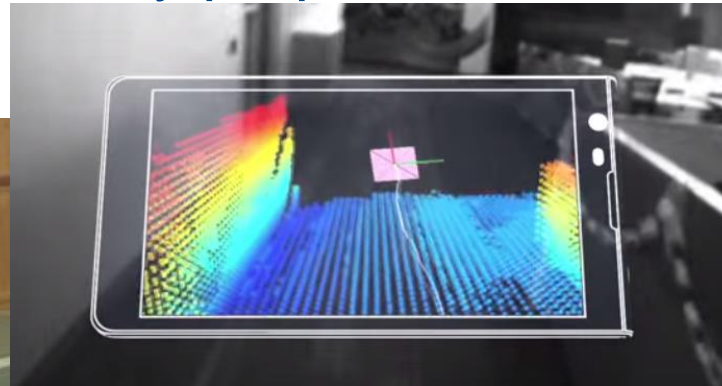
- Schedules
 - Resources
 - Costs
 - Quality assurance
 - Tasks
- Work
 - Approvals
 - RFI:s
 - Submittals
 - ...



DRUM - Distributed information management

Why semantic data?

- Technology development enables automatic use of data
 - Robots (good example ping pong playing robot)
 - Augmented reality taken to next step by Google Tango project
 - Drones used for many purposes



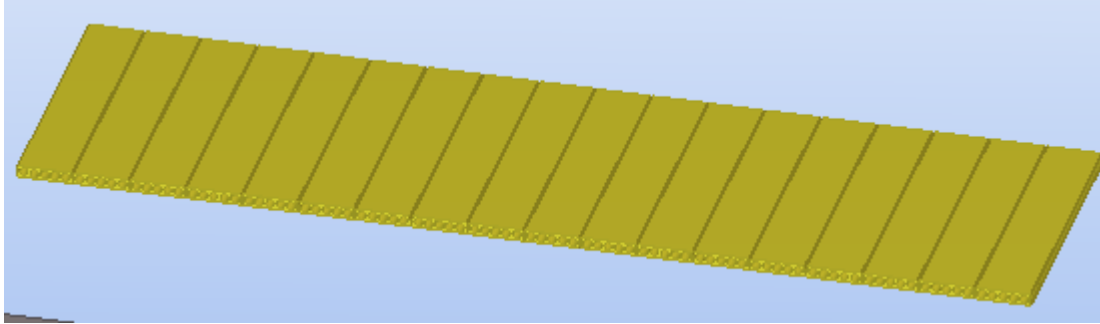
Augmented reality & wearable computers...



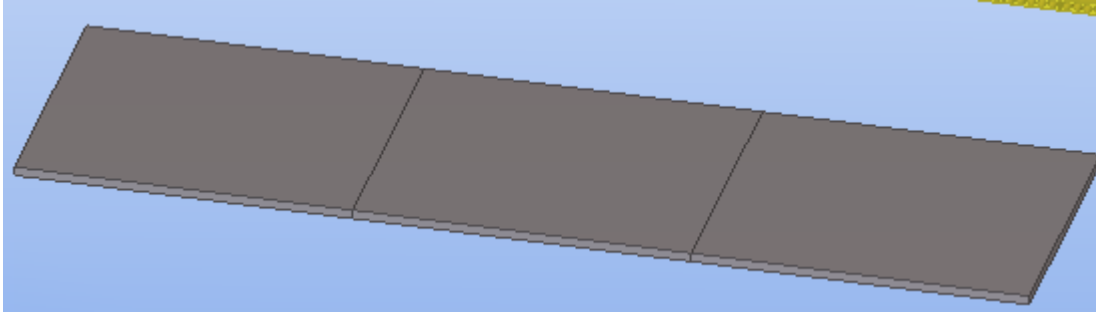
Google Glasses use an automatic connection to the cloud to provide access to enormous amounts of information, data and applications...



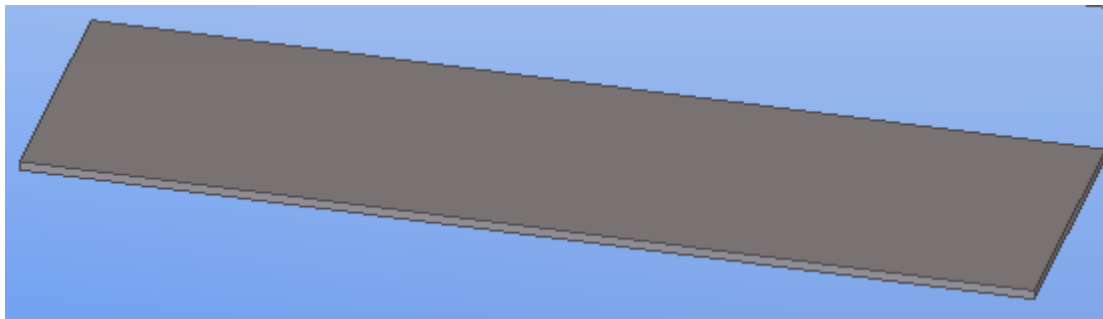
Ambiguous modeling, different phases



Detailing



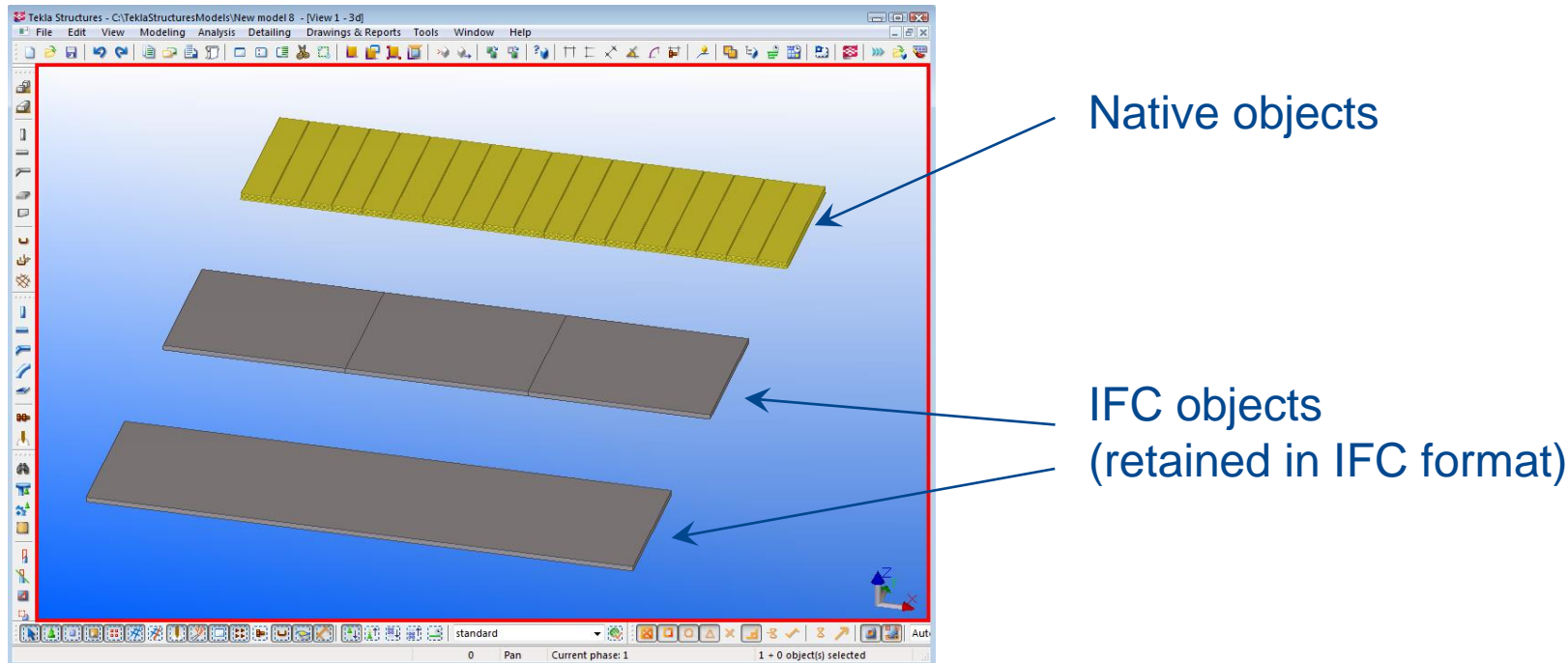
Engineering



Architectural

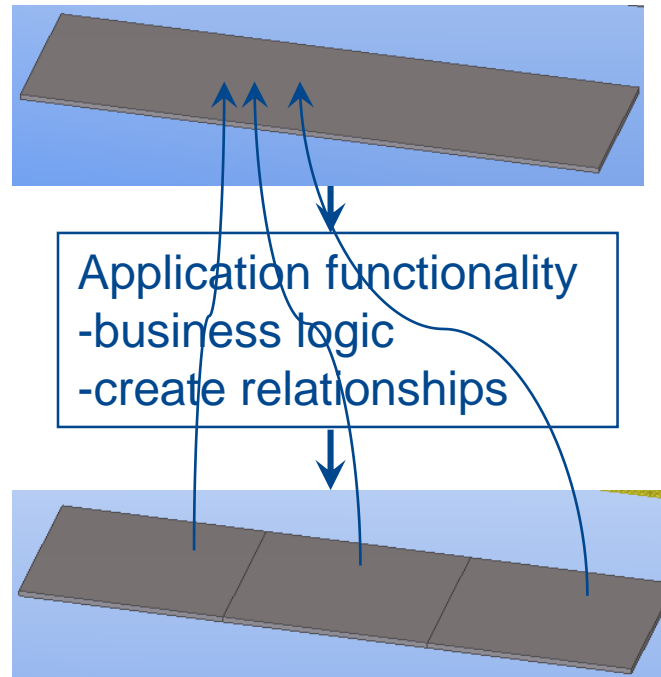
Reference model principle

- Application capable of presenting and using native objects and objects in foreign schemas (IFC) simultaneously
- Foreign information not bulk converted to native schema.

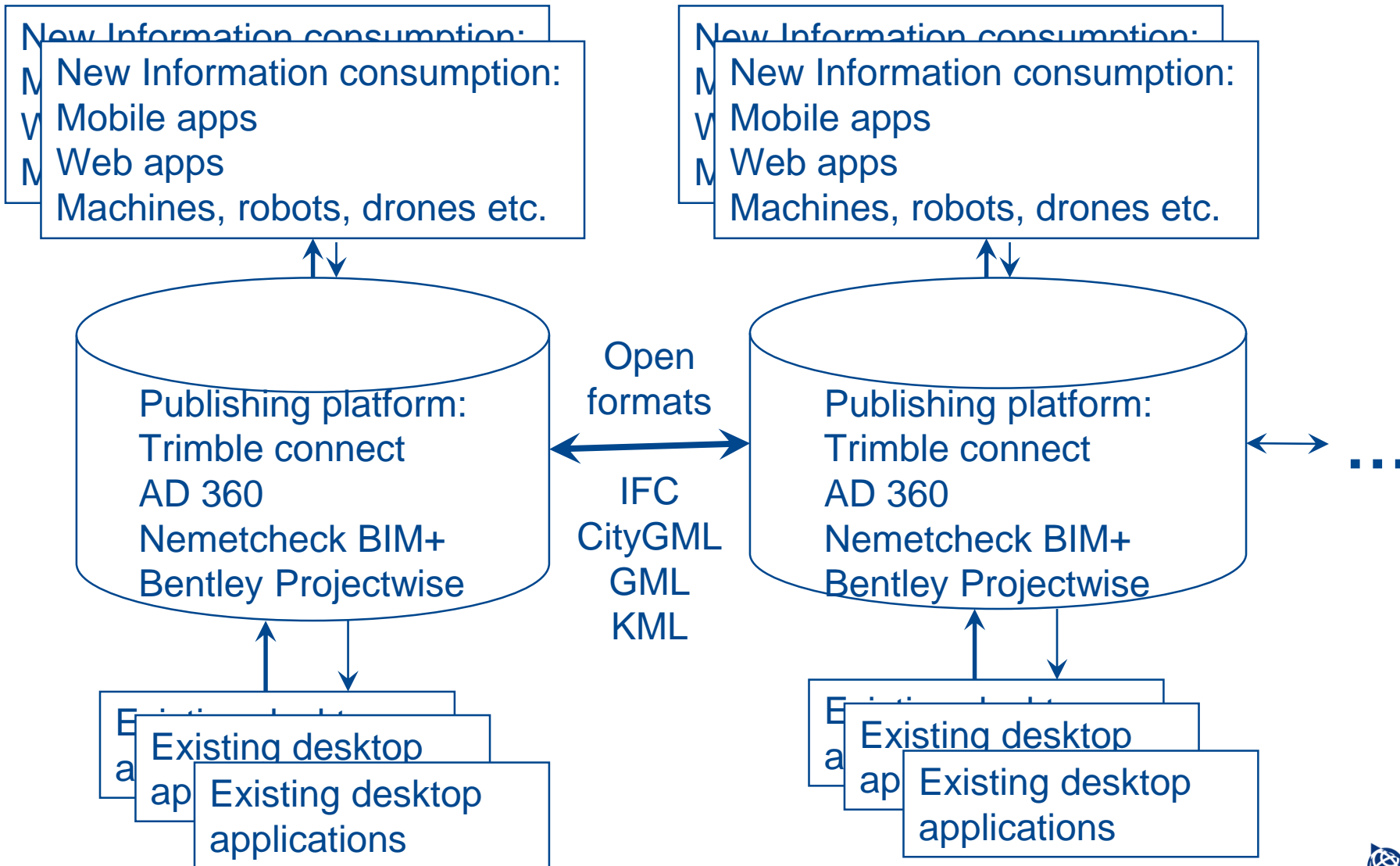


Intra discipline workflow

Intelligent object converter



System architecture diagram



Information is Available – Trimble Connect

